

Psychiatry Clinic of Tartu University Hospital



Sven Janno MD, PhD
Senior psychiatrist
Head of the acute department

Psychiatry Clinic of Tartu University Hospital

- History
- Catchment area
- Structure/organisation
- Services' profile
- Patients' profile
- Funding

History

- Initiator E. von Wahl
- 04.03.1877



History

- First psychiatrist
Alexander von Bunge



History

- “Old House” 16.04.1881 – 18.11.1988



Emil Kraepelin
23.08.1886 - 21.03.1891

Catchment area

(population in the year 2010)

1. Primary ^(44%) 310774

- Tartu 150 074
- Jõgeva 36 671
- Põlva 30 889
- Võru 37 693
- Viljandi 55 447

2. Secondary ^(12%) 235622

- Ida-Viru 168 656
- Lääne-Viru 66 966



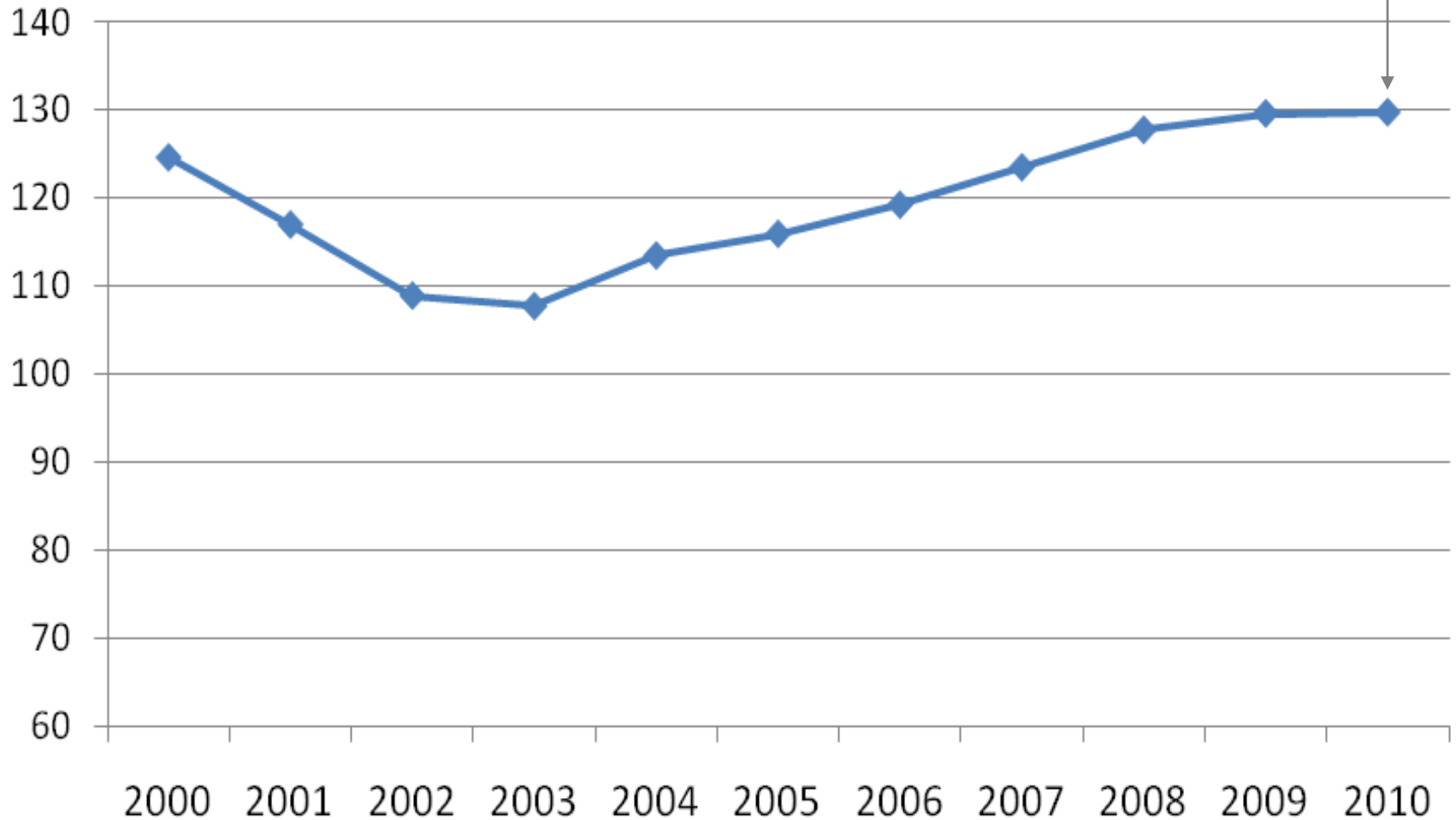
Structure/organisation

- Administration
- Departments
 - Acute Psychiatry
 - General Psychiatry
 - Child and Adolescence Psychiatry

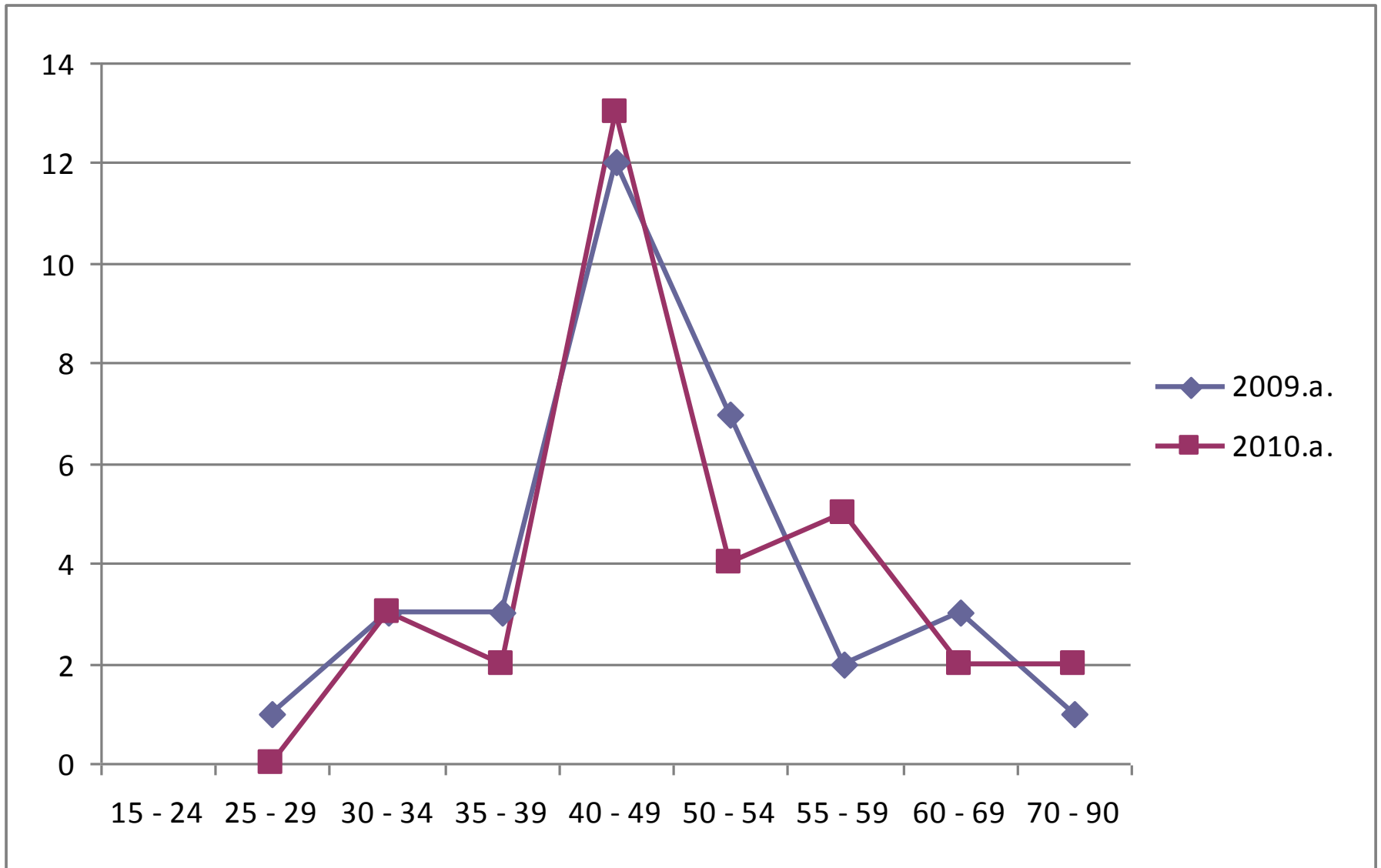
All wards are dealing both with inpatients and outpatients

Personnel of Psychiatry Clinic

Number of full time positions – 129.75 (2010)
Number of employees - 183 (2010)



Age of psychiatrists



Structure of inpatient care

(totally 86 hospital beds)

Acute Department

Emergency room
- 24/7

Acute ward for men
/9

Acute ward for women
/8

Subacute ward
/18

Psychiatry Department

Sleeping disorders,
sleep lab /2

Eating disorders
/10

General psychiatry
/25

Child and Adolescence Psychiatry

Children
/10

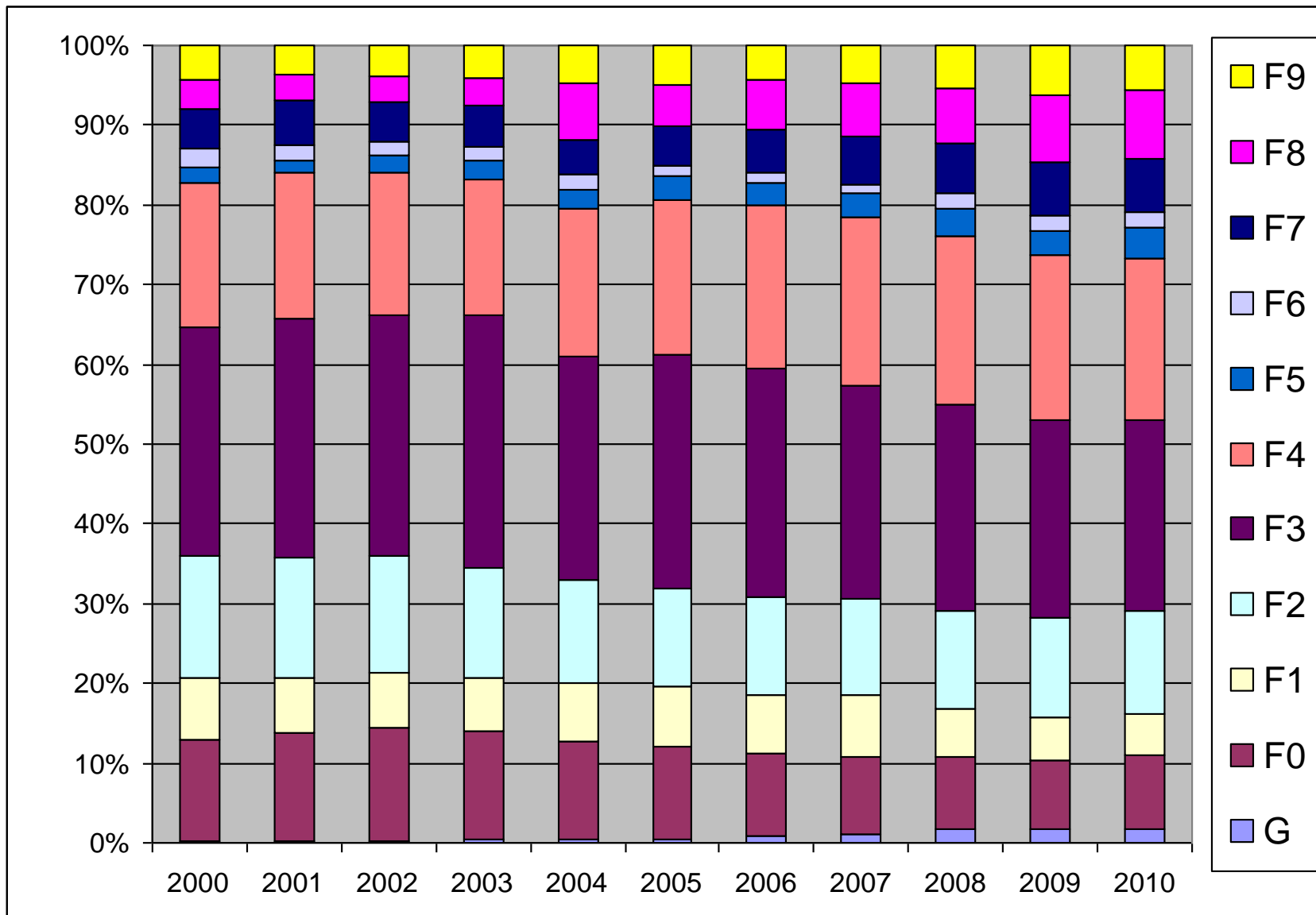
Adolescents
/4

Addiction disorders
/2

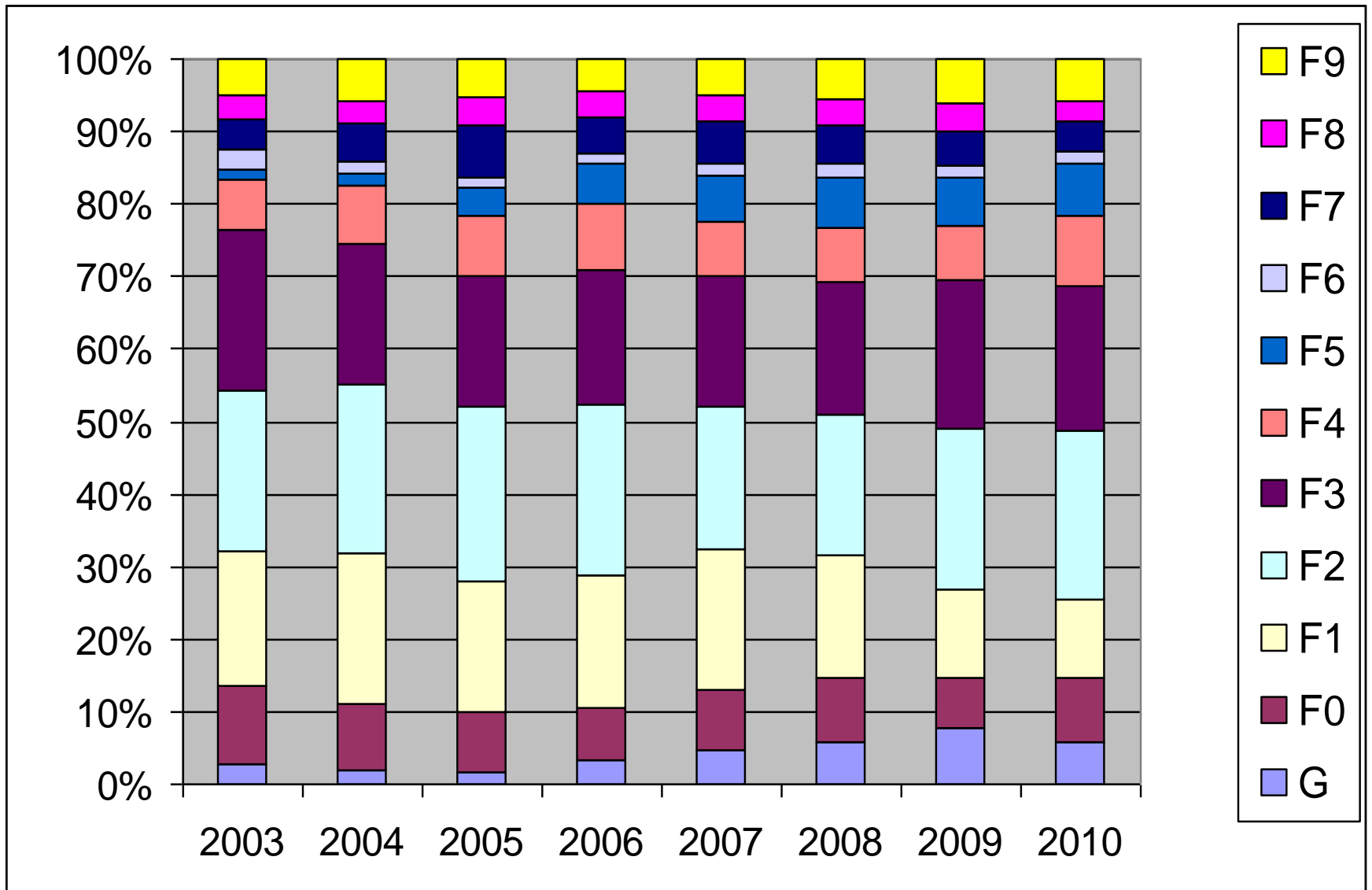
Services

- Treatment (out- and inpatient)
- Teaching (trainees, students)
- Forensic psychiatry

Outpatients' diagnoses

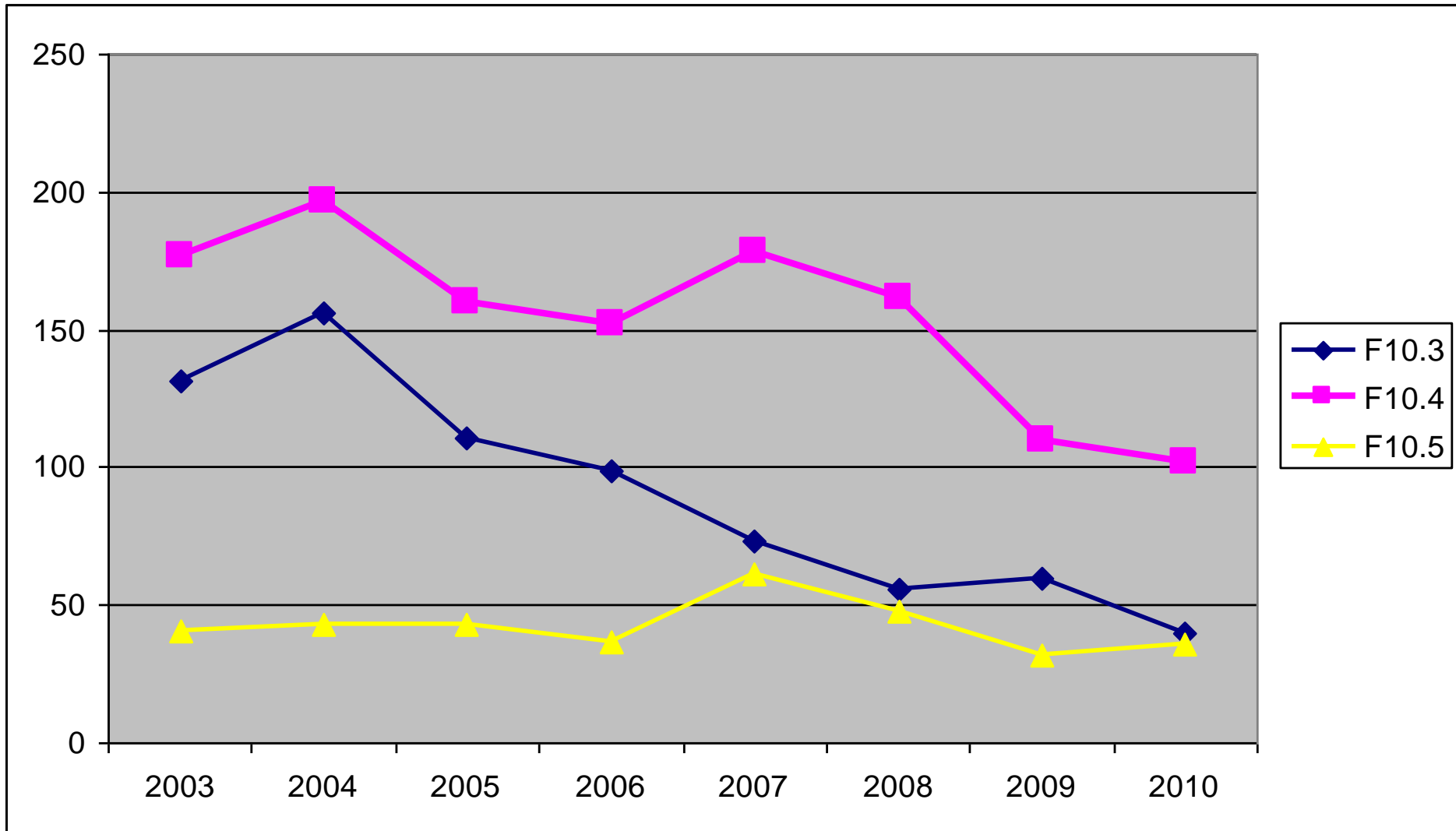


Inpatients' diagnoses



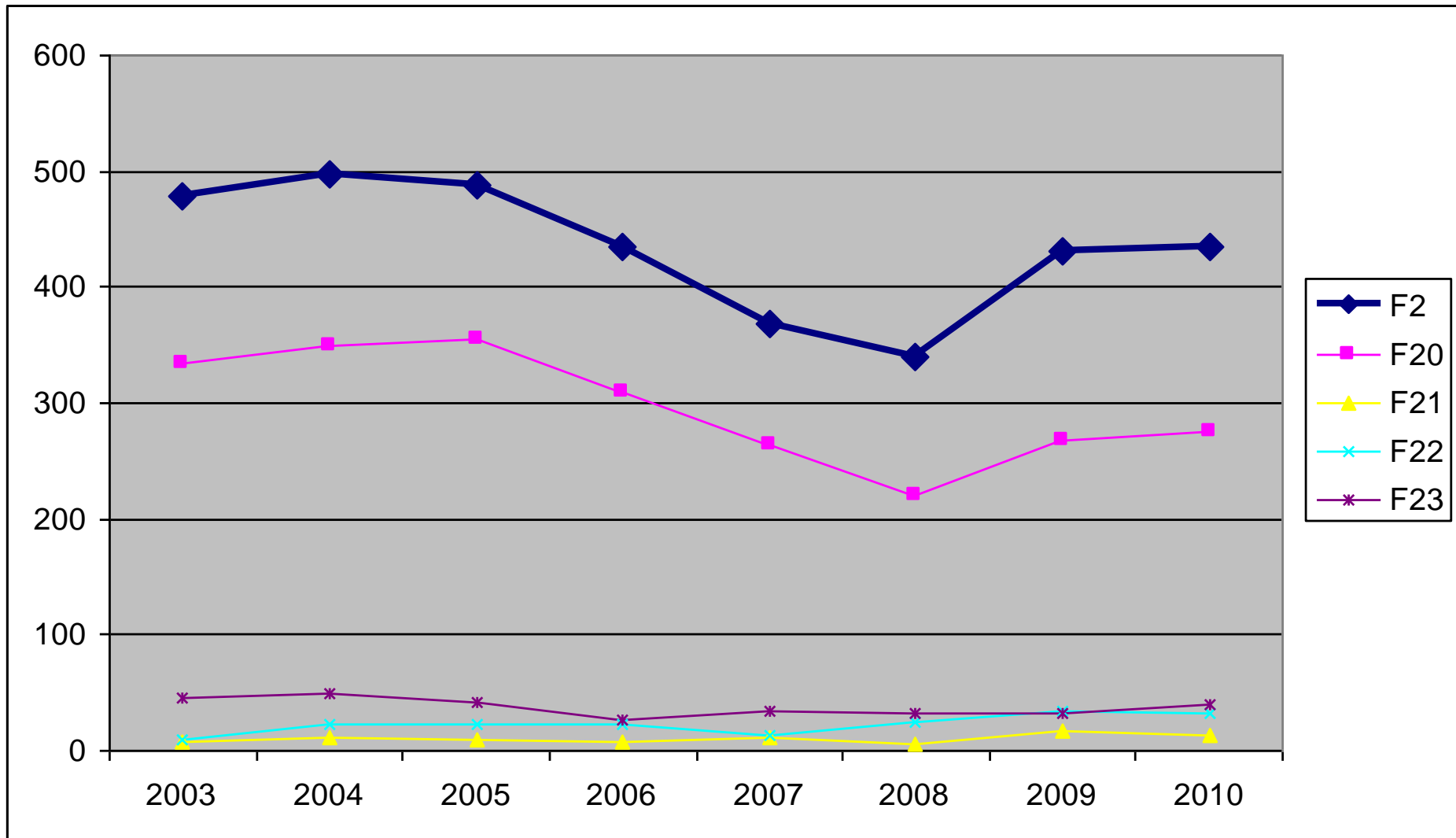
Inpatients F10

(number of cases)



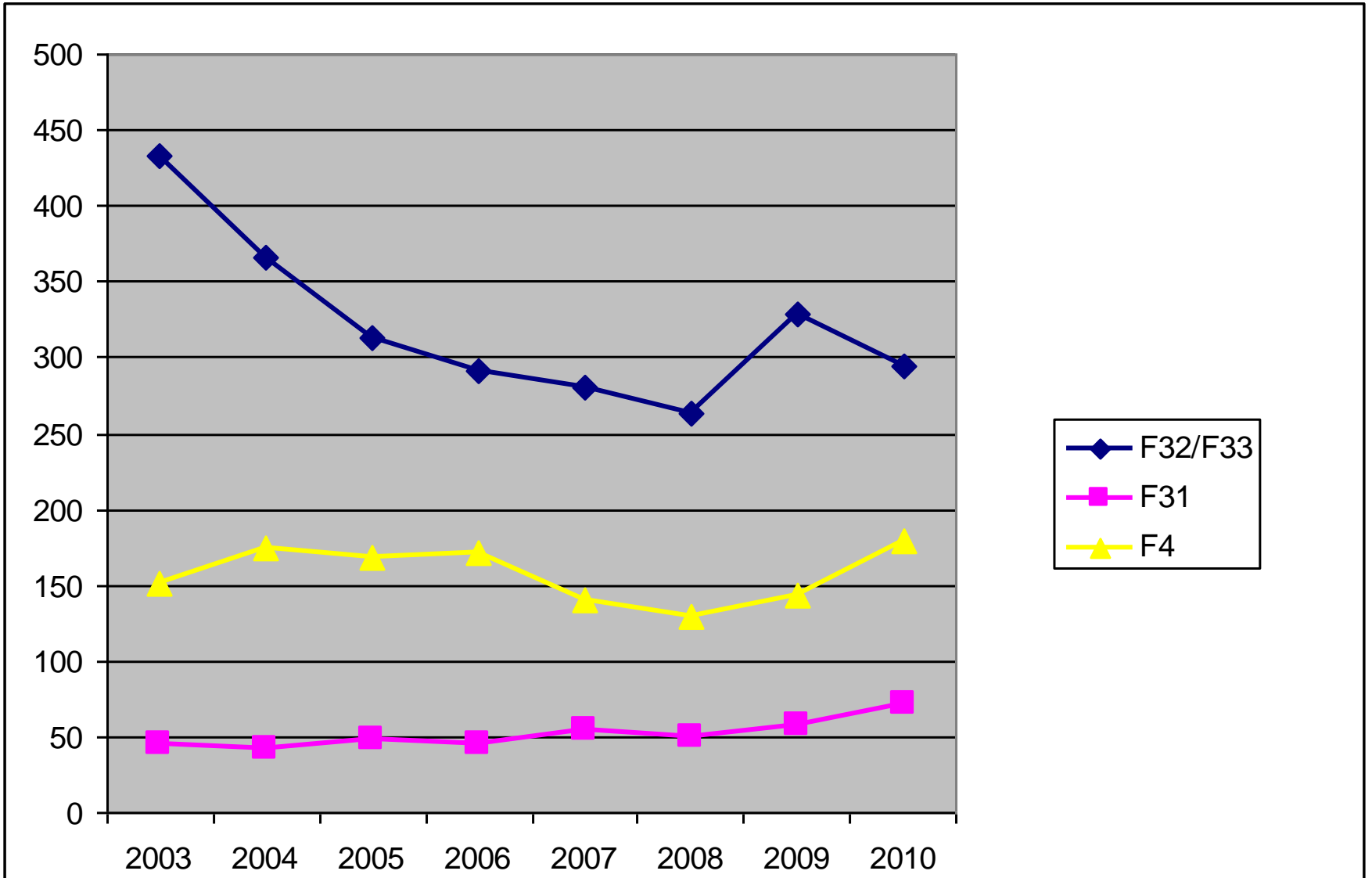
Inpatients F2

(number of cases)

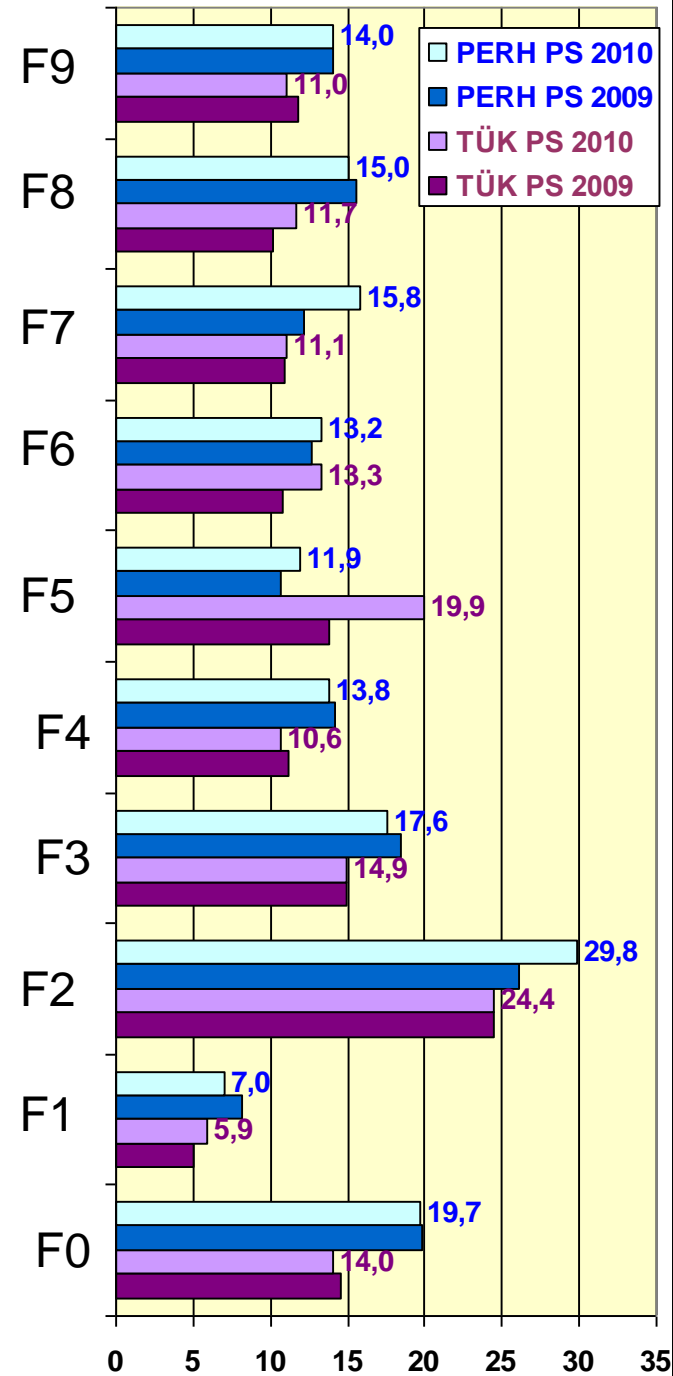


Inpatients F3/F4

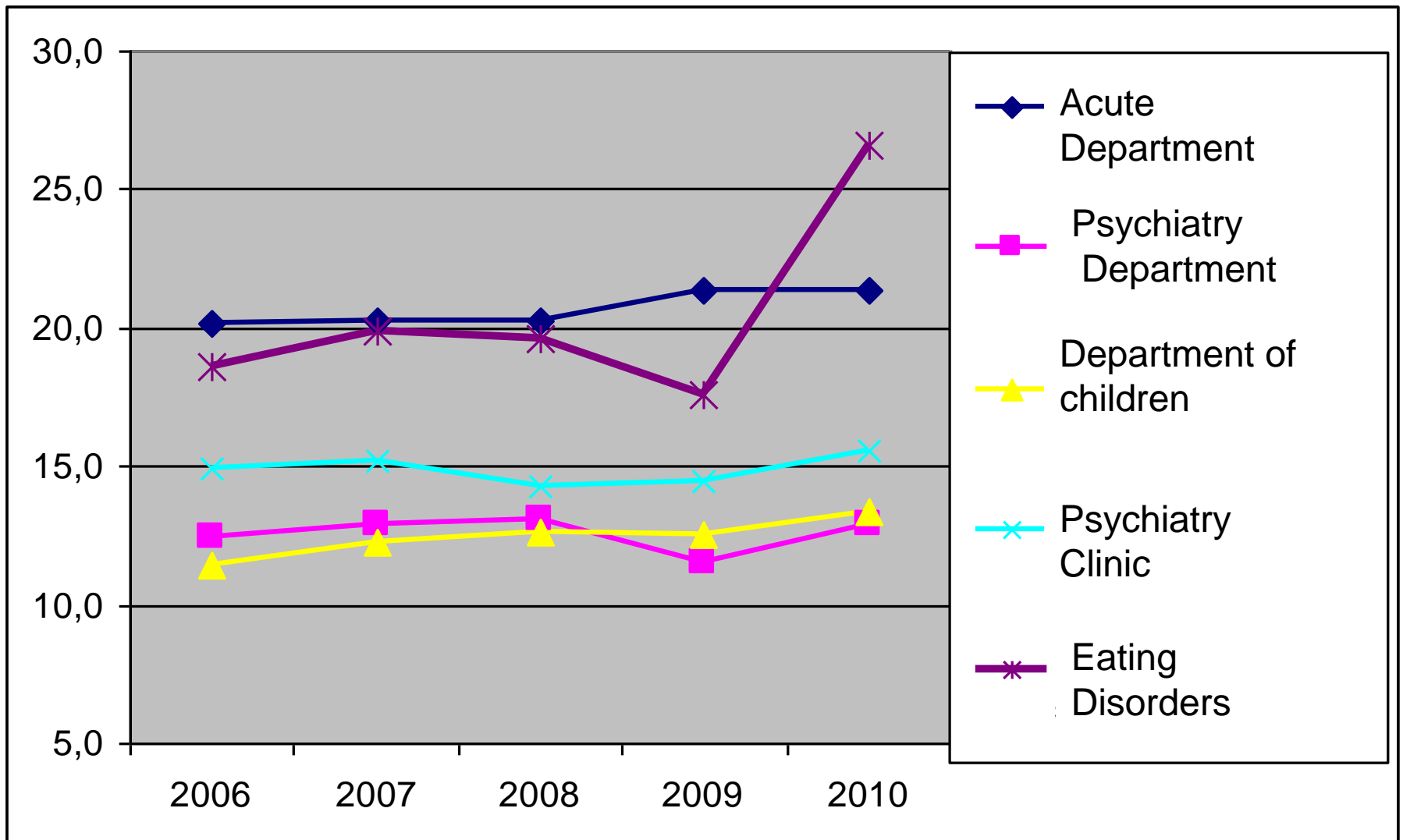
(number of cases)



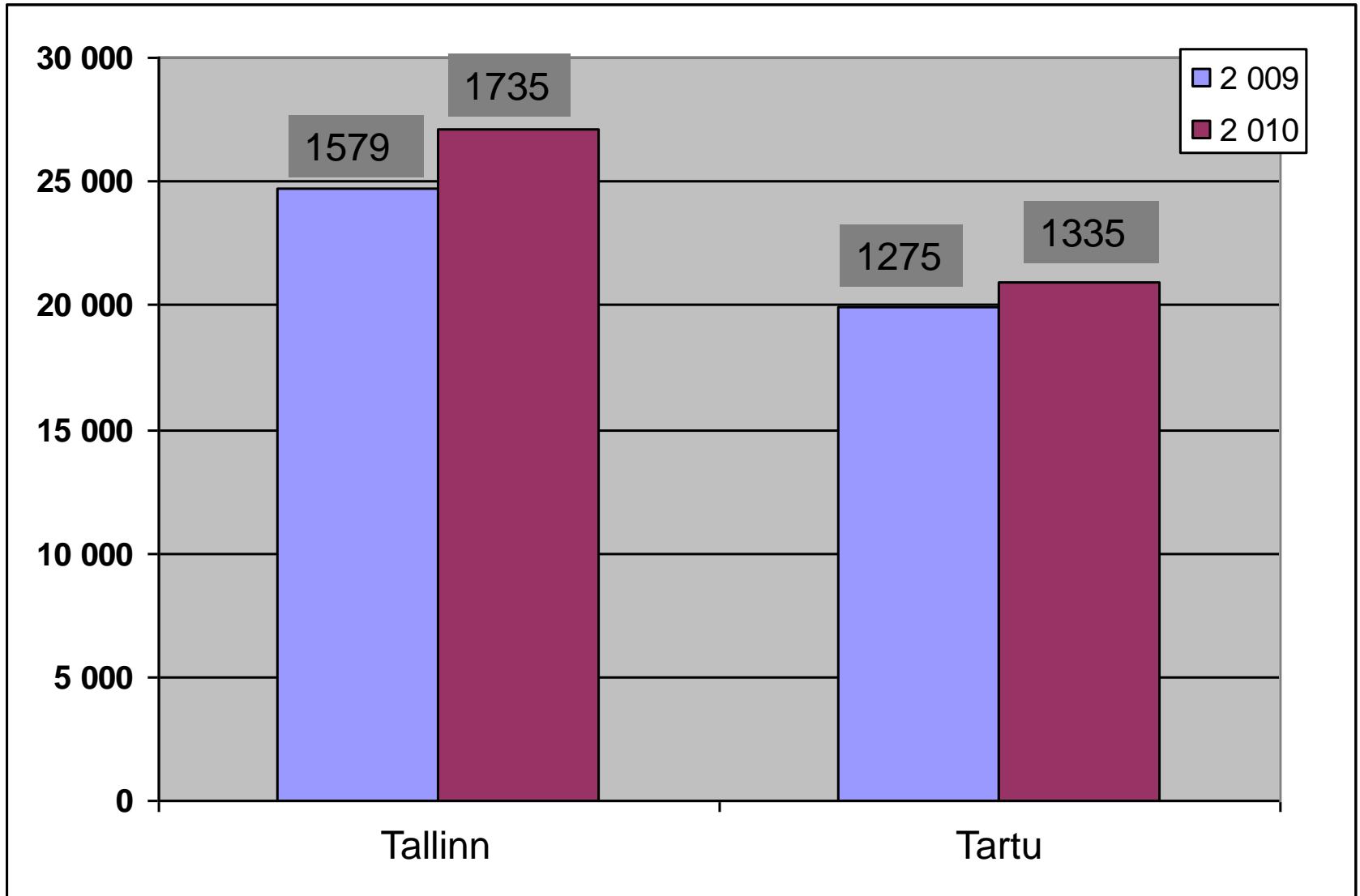
Mean time in hospital according to diagnoses Tartu vs Tallinn 2009-2010



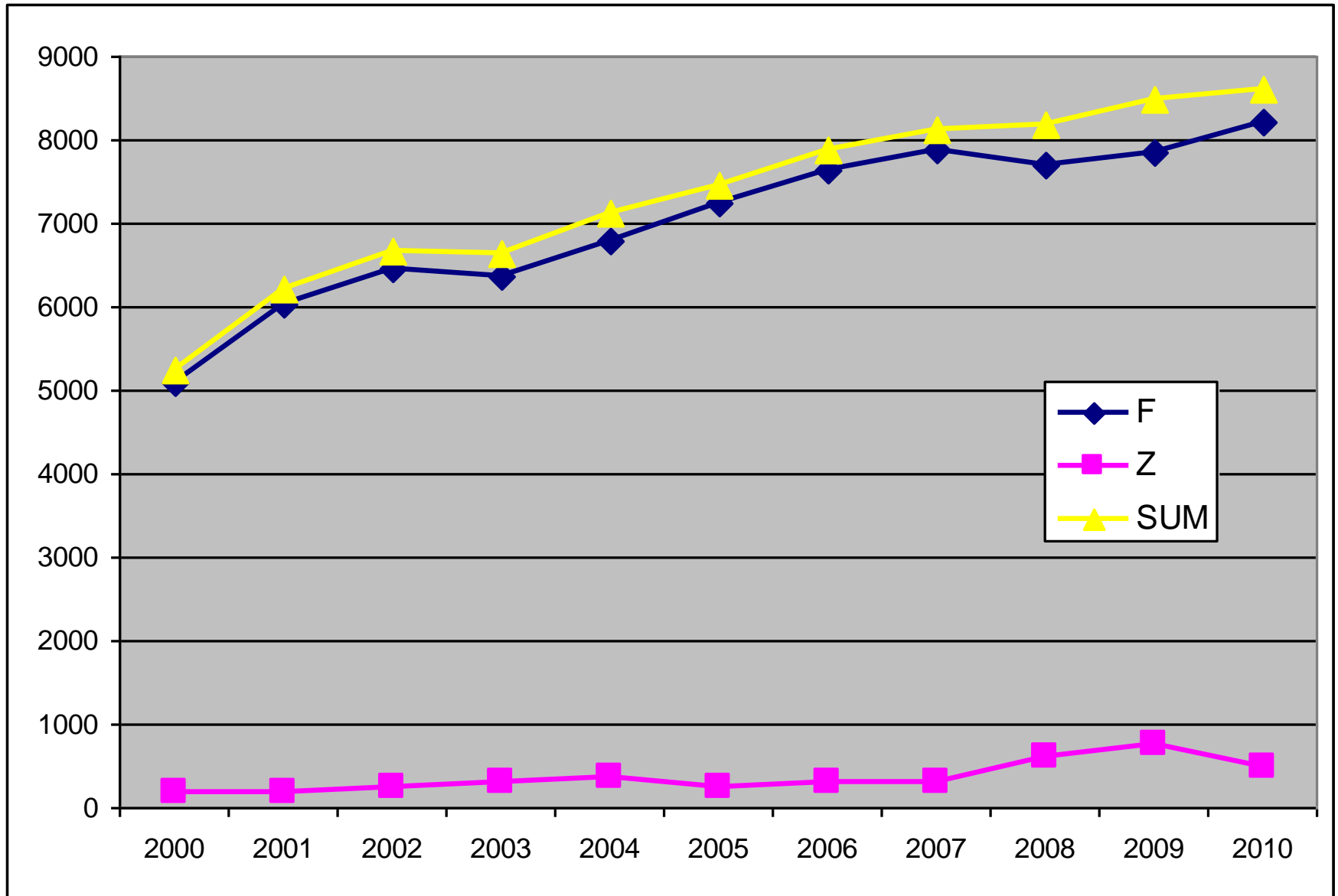
Mean time patients are staying in the hospital



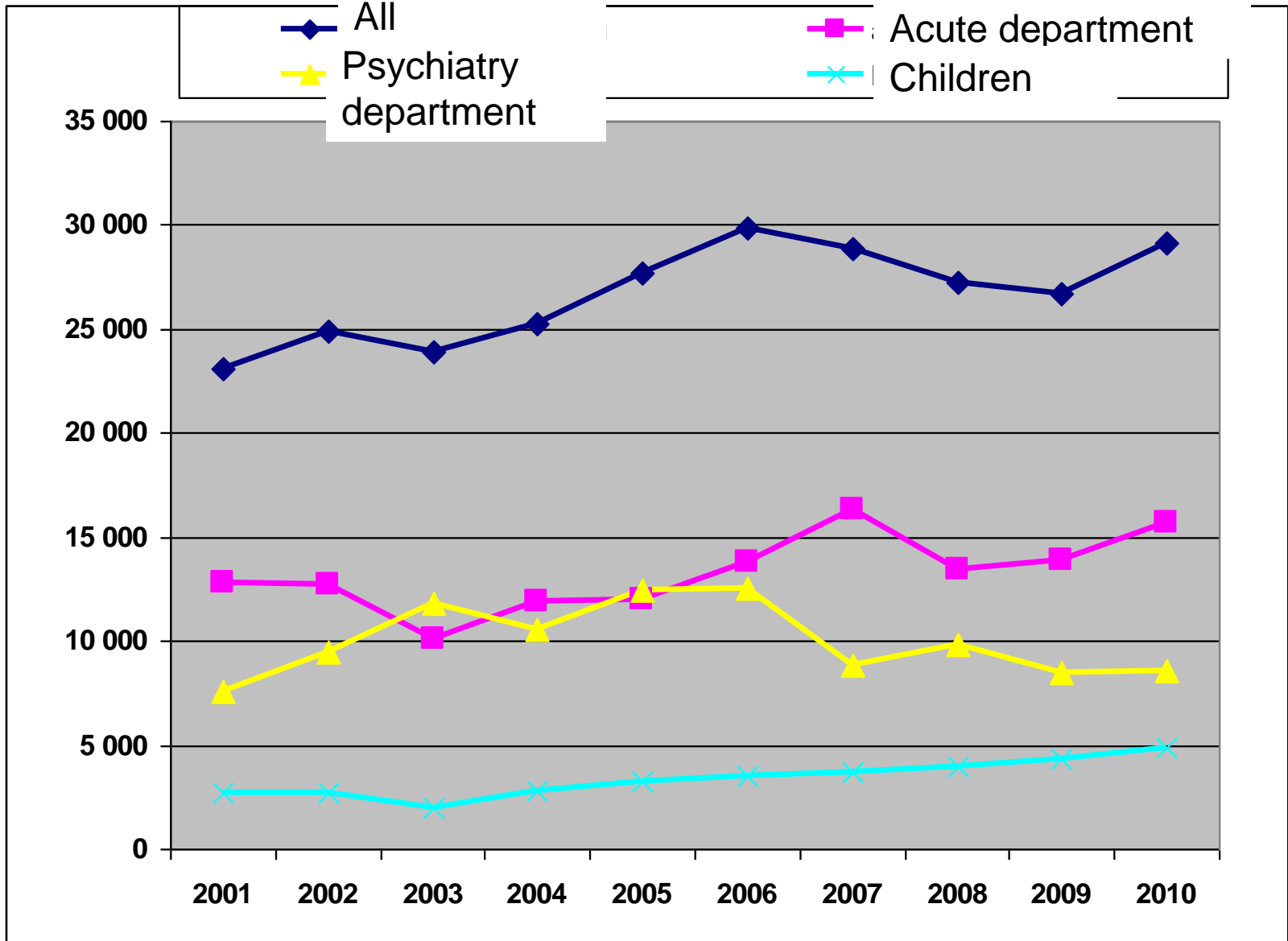
Mean inpatient case cost (€)



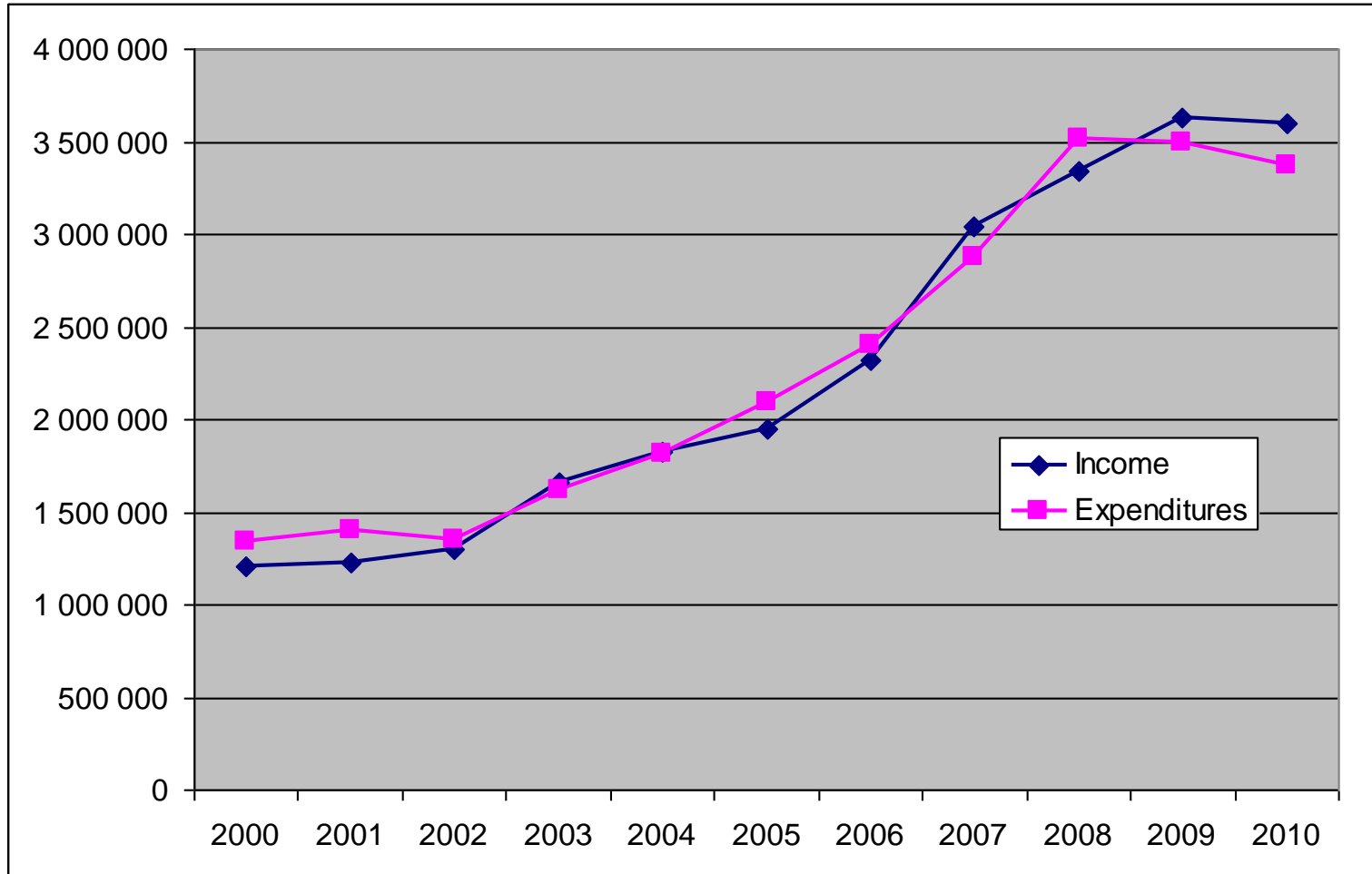
Outpatient number



Outpatients' visits



Income and expenditures (€)



Finances

- Income

- Health Insurance Fund
87%
- Medical services to
other institutions 4%
- Other services 8%

- Expenditures

- Personnel 66%
- Medical services,
material 10%
- Other (heating etc)
24%



Questions
are
guaranteed in
life;
Answers
aren't.